

锂电池增氧泵 AQUARIUM AIR PUMP



YE-100G



YE-200G

型号 MODEL	电池容量 BATTERY CAPACITY	功率 WATT	最大气量 F.MAX
YE-100G	1500mAh	1.5W	1.5L/min
YE-100G	2200mAh 升级版	2W	2L/min
YE-200G	2600mAh	3W	2x1.5L/min
YE-200G	3350mAh 升级版	3.5W	2x2L/min

Voltage: AC 110-120V / 220-240V Frequency: 50/60Hz

Speciality

- Imported high-capacity lithium battery with long service life.
- Energy-saving motor, environment-friendly design.
- Long-life, safe and durable due to high quality rubber materials and diaphragm valve.

产品特性

采用进口高容量锂电池，续航时间超长；
节能电机，环保设计；
高品质的橡胶控制阀和膜片，寿命长，安全可靠。

核心防水
Core waterproof

锂电池增氧泵 AQUARIUM AIR PUMP



YE-PC100, YE-PC200



YE-PC300, YE-PC400

型号 MODEL	电池容量 BATTERY CAPACITY	功率 WATT	最大气量 F.MAX
YE-PC100	1800mAh	1.5W	1.5L/min
YE-PC200	2600mAh	1.5W	1.5L/min
YE-PC300	2600mAh	3W	2x1.5L/min
YE-PC400	4800mAh	3.5W	2x2L/min

Voltage: AC 110-120V / 220-240V Frequency: 50/60Hz

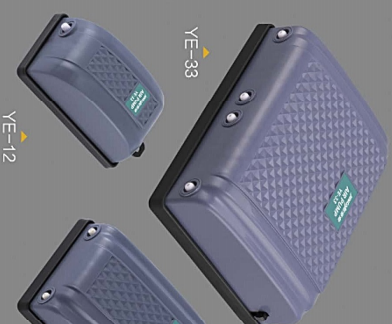
Speciality

- Imported high-capacity lithium battery with long service life.
- Energy-saving motor, environment-friendly design.
- Long-life, safe and durable due to high quality rubber materials and diaphragm valve.

产品特性

采用进口高容量锂电池，续航时间超长；
节能电机，环保设计；
高品质的橡胶控制阀和膜片，寿命长，安全可靠。

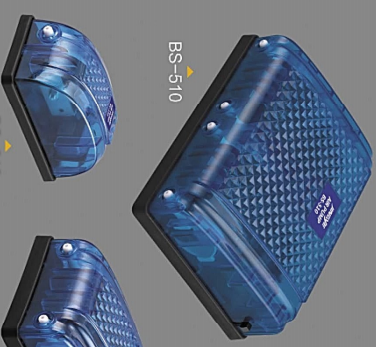
增氧泵 AQUARIUM AIR PUMP



YE-33

YE-12

YE-22



BS-510

BS-310

BS-410

型号 MODEL	功率 WATT	最大气量 F.MAX
YE-12	3W	3.5L/min
YE-22	5W	2x4L/min
YE-33	10W	4x4L/min

Voltage: AC 110-120V / 220-240V Frequency: 50/60Hz

型号 MODEL	功率 WATT	最大气量 F.MAX
BS-310	3W	3.5L/min
BS-410	5W	2x4L/min
BS-510	10W	4x4L/min

Voltage: AC 110-120V / 220-240V Frequency: 50/60Hz

Speciality

- Energy-saving motor, environment-friendly design.
- Long-life, safe and durable due to high quality rubber materials and diaphragm valve.

产品特性

节能电机，环保设计；
高品质的橡胶控制阀和膜片，寿命长，安全可靠。

静音增氧泵 (可调) AQUARIUM AIR PUMP



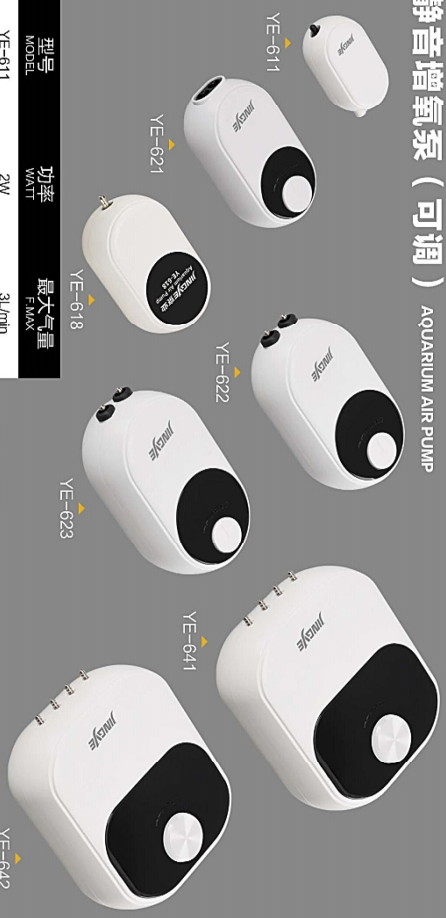
型号 MODEL	功率 WATT	最大气量 F MAX
YE-911	2W	3L/min
YE-918	4W	5.5L/min
YE-921	3W	2x3.4L/min
YE-922	4W	2x3.5L/min
YE-923	6W	2x4.5L/min
YE-941	8W	4x3L/min
YE-942	12W	4x4L/min

Voltage: AC 110-120V / 220-240V Frequency: 50/60Hz

- Speciality**
- Energy-saving motor, environment-friendly design.
 - Long-life, safe and durable due to high quality rubber materials and diaphragm valve.
 - Low noise and high working stability.

- 产品特性**
- 节能电机, 环保设计;
 - 高品质的橡胶隔膜阀门, 寿命长, 安全耐用;
 - 超静音, 性能稳定。

静音增氧泵 (可调) AQUARIUM AIR PUMP



型号 MODEL	功率 WATT	最大气量 F MAX
YE-611	2W	3L/min
YE-618	5W	5.5L/min
YE-621	3W	2x3.4L/min
YE-622	4W	2x3.5L/min
YE-623	6W	2x4.5L/min
YE-641	8W	4x3L/min
YE-642	12W	4x4L/min

Voltage: AC 110-120V / 220-240V Frequency: 50/60Hz

- Speciality**
- Energy-saving motor, environment-friendly design.
 - Long-life, safe and durable due to high quality rubber materials and diaphragm valve.
 - Low noise and high working stability.

- 产品特性**
- 节能电机, 环保设计;
 - 高品质的橡胶隔膜阀门, 寿命长, 安全耐用;
 - 超静音, 性能稳定。

静音增氧泵 (可调) AQUARIUM AIR PUMP



型号 MODEL	功率 WATT	最大气量 F MAX
YE-822	8W	2x3.5L/min
YE-823	12W	2x4.5L/min
YE-841	8W	4x3L/min
YE-842	12W	4x4L/min

Voltage: AC 110-120V / 220-240V Frequency: 50/60Hz

- Speciality**
- Energy-saving motor, environment-friendly design.
 - Long-life, safe and durable due to high quality rubber materials and diaphragm valve.
 - Low noise and high working stability.

- 产品特性**
- 节能电机, 环保设计;
 - 高品质的橡胶隔膜阀门, 寿命长, 安全耐用;
 - 超静音, 性能稳定。

锂电池增氧泵 AQUARIUM AIR PUMP



型号 MODEL	电池容量 BATTERY CAPACITY	功率 WATT	最大气量 F MAX
YE-LD05	1	1.5W	1.5L/min
YE-LD10	1500mAh 2200mAh 升级版	1.5W	1.5L/min
YE-LD20	2600mAh 3350mAh 升级版	3W	2x1.5L/min
YE-LD30	4000mAh 6000mAh 升级版	3.5W	2x2L/min

Voltage: AC 110-120V / 220-240V Frequency: 50/60Hz

- Speciality**
- Improved high-capacity lithium battery with long service life.
 - Energy-saving motor, environment-friendly design.
 - Long-life, safe and durable due to high quality rubber materials and diaphragm valve.

- 产品特性**
- 采用进口高容量锂电池, 续航时间更长;
 - 节能电机, 环保设计;
 - 高品质的橡胶隔膜阀门, 寿命长, 安全耐用。